



Altec AN29/32/32E Non-Overcenter Articulating Aerial Device



- Altec ISO-Grip® Control System
- Working Height to 37.0 ft (11.28 m)
- Side Reach to 18.5 ft (5.64 m)



STANDARD FEATURES

- Altec ISO-Grip® Control System
- Non-Overcenter Articulating Aerial Device
- Side-Mounted Platform 24 x 24 x 42 in (610 x 610 x 1067 mm)
- Platform Capacity 350 lb (159 kg)
- Continuous Rotation
- Outrigger Boom Interlock System (with Outrigger Option)
- Positive Platform Leveling
- Full Pressure, Open Center Hydraulic System
- Designed and Manufactured in ISO 9001 Certified Facility
- ANSI, Category C, 46kV and below
- Lower Boom Insert

RECOMMENDED FEATURES

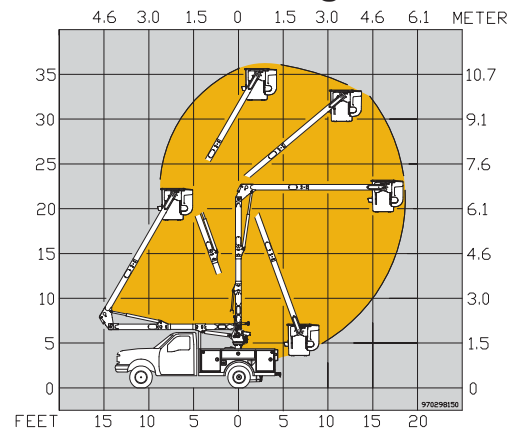
- Platform Liner
- Fall Protection System
- Wheel Chocks 10 x 8 x 5.5 in (254 x 203 x 140 mm)

Altec reserves the right to improve models and change specifications without notice or obligation.

OPTIONS

- Diagnostic Pressure Test Kit
- Secondary Stowage System
- Engine Start/Stop – From the Platform, captive air type
- Platform Cover
- Pump – Clutch or PTO
- Throttle System
- Tool Circuit at Tailshelf
- Tool Circuit at Platform
- Platform Tilt – From Lower Controls
- Platform 24 x 30 x 42 in (610 x 762 x 1067 mm)
- Modified A-Frame Outriggers

Reach Diagram



GENERAL SPECIFICATIONS

	AN29		AN32		AN32E	
Ground to Bottom of Platform* at Distance from Centerline	29.0 ft	8.84 m	32.0 ft	9.75 m	32.0 ft	9.75 m
Working Height*	34.1 ft	10.37 m	37.0 ft	11.28 m	37.0 ft	11.28 m
Maximum Reach from Centerline of Rotation to Lip of Platform	15.54 ft	4.74 m	17.5 ft	5.33 m	18.5 ft	5.64 m
Stowed Travel Height	8.85 ft	2.7 m	8.85 ft	2.7 m	8.85 ft	2.7 m
Platform Capacity	350 lb	159 kg	350 lb	159 kg	350 lb	159 kg
Upper Boom Articulation	130°	130°	130°	130°	130°	130°
Lower Boom Articulation	90°	90°	90°	90°	90°	90°
Rotation	Continuous	Continuous	Continuous	Continuous	Continuous	Continuous
Weight of Unit	1,470 lbs	667 kg	1,510 lbs	685 kg	1,510 lbs	685 kg

*Based on chassis frame of 27 in (686 mm). When mounted on a 40 in (1016 mm) chassis, add 13 in (330 mm) to above specifications. Meets ANSI A.92.2

Altec Sales and Service



Manufacturing and Service Facilities Located Throughout the United States and Canada
www.altec.com

Altec Industries, Inc.

Post Office Box 10264
Birmingham, Alabama 35202
Phone 205/991-7733
Fax 205/991-9993
sales@altec.com